

2020

fleetwoodrv.com

CLASS A DIESEL | PACE ARROW



 **FLEETWOOD RV**
PACE ARROW

- 2 | INTRO
- 4 | CONSTRUCTION
- 6 | INTERIOR GALLERY
- 12 | FLOORPLANS
- 14 | EXTERIOR GRAPHICS
- 15 | DECOR
- 16 | STANDARDS AND OPTIONS
- 18 | OUTSTANDING STANDARDS AND OPTIONS
- 19 | SPECIFICATION CHARTS



SMALL PACKAGE. BIG IMPACT.

If you want flexibility and power, then Pace Arrow was made for you. This “pocket diesel” gives you more maneuverability and a lower profile, meaning you can take it to places like national or state parks. Plus, it comes with standards like a 600-pound capacity Hide-A-Loft™ queen bed, a 40-inch LED exterior TV and soundbar, and Fleetwood’s exclusive Freedom Bridge® chassis with V-Ride® suspension.

For 2020, we’ve added two brand new one-of-a-kind floorplans to the Pace Arrow line, as well as a digital dash, fully-integrated steering wheel controls, auto headlights and blind spot detection.

With every detail, you’ll see why Pace Arrow is setting the pace across the market.

PACE ARROW 35RB
VISION GRAPHICS



Fleetwood RV and Freightliner Custom Chassis have teamed up to bring you the ultimate in luxury, power and performance. Introducing the newly re-engineered Freedom Bridge foundation.

Freedom Bridge foundation combines the unrivaled strength and storage capacity of Fleetwood RV's exclusive modular design with the high-performance innovation of a Freightliner chassis—all backed by the nation's largest service support network. The new Freedom Bridge brings performance and peace of mind together, perfectly.



DriveTech rolls together FCCC's latest innovations—like the OptiView all-digital LCD dash display and FCCC's all-new ergonomic steering wheel and column-mounted controls— into one comfortable, easy-to-use driver console.



RV OWNERCARE

Limited one-year/15,000-mile coach warranty and three-year/45,000-mile structural warranty, whichever occurs first, and it is fully transferable for the first 12 months. RV OWNERCARE is one of the RV industry's most comprehensive programs and includes systems, appliances, components and construction, with no deductible and no service charge.

Chassis Warranty provided by Freightliner Custom Chassis Corporation®

INTRODUCING DRIVETECH—the most advanced display and control system in the RV industry. DriveTech is the first RV driving system to prioritize safety by putting every command in one easy-to-reach location. The all-new ergonomic steering wheel and column-mounted controls are paired with OptiView's all-digital gauge display to create a more automotive-like feel and set the industry standard for luxury RV driving. And it's only from Freightliner Custom Chassis.

PRIORITIZING DRIVER SAFETY
A recent study reported that 80% of collisions and 65% of near collisions involved some form of driver distraction, often from using electronic devices while driving. DriveTech prioritizes driver safety by streamlining and simplifying controls to help drivers focus their full attention on maneuvering and piloting the coach.

CONNECTING WITH RV DRIVER EXPECTATIONS
The world is changing. By 2020, more than 90% of cars sold will be connected—equipped with Internet access and a wireless network to share data with devices both inside and outside the vehicle. DriveTech updates the RV driver's station to align with that of the automotive industry, delivering the luxury experience modern drivers expect.



We build strength and quality from the inside out.

Fleetwood's exclusive Powerlock™ system is integrated into all Fleetwood RV Class A Diesel models.

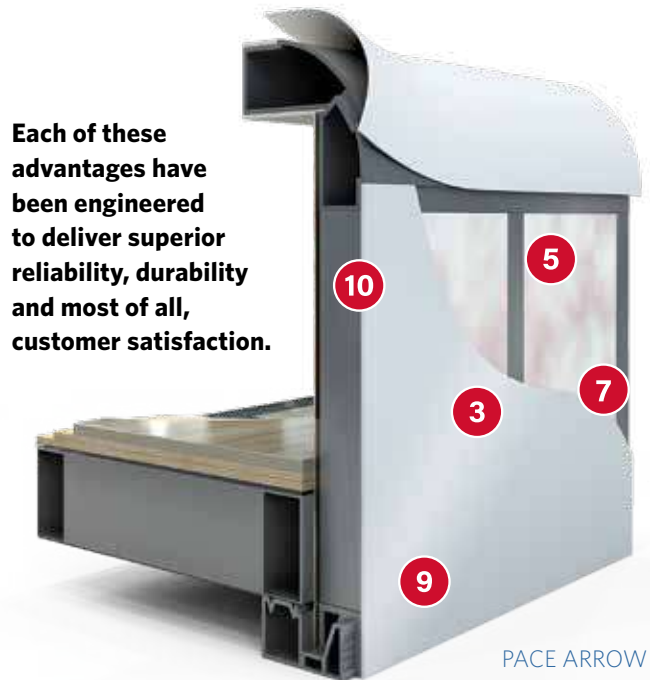


At Fleetwood, we don't settle for anything less than the best and neither should you. That is why every Fleetwood features industry-leading materials and construction standards.

- 1 PowerLock System™ Interlocking Floors, Walls, Ceiling**
Fleetwood's interlocking aluminum extrusion wall-joint system integrates floor, sidewall and roof assembly into one locked-together overall structure for long-term performance and durability.
- 2 Precision Welded Joints**
The all aluminum hull structure is engineered and built to precise tolerances and then precision welded to ensure strength and durability on even the roughest road trip.

At Fleetwood RV, it's not just what you see that matters. It's what you don't.

- 3 Tuff-Coat Fiberglass Walls**
Thicker than other manufacturers, our Tuff-Coat fiberglass walls provide a durable skin and is the perfect surface for an automotive style finish.
- 4 Thick Robust Floor**
Thicker than the industry standard, Fleetwood engineered the floor for more sound deadening and more insulation which results in a quieter, more comfortable ride no matter the weather or terrain outside.
- 5 Solid Bead-Foam Insulation™**
Fleetwood's above-standard insulation material and process doesn't allow settling or air gaps to form. There is no forcing the precision cut insulation into position like the roll-type pink fiberglass insulation used by other manufacturers.
- 6 Loctite® Industrial Adhesive**
Engineered to meet bonding, sealing and assembly requirements for a durable structure with no de-lamination.
- 7 No Wood Substrate**
Unlike most Class A motorhome manufacturers, you won't find any wood substrate on the exterior walls.
- 8 1/2" Plywood Subfloor**
Thicker than most competitors who use OSB or chip board, the integrated 1/2" subfloor provides a solid surface for flooring and eliminates movement and flexing while traveling.
- 9 Vacu-Bond™ Construction**
Fully sealed and weather-resistant, the vacuum-bonded assemblies combine materials and construction for a straight, solid integrated wall that is better suited to withstand the rigors of the road. An adhesive bonding process applies up to 415,000 pounds of vacuum pressure to the welded-aluminum sidewall frame, bead-foam insulation, thick Tuff-Coat fiberglass skin and inner wall materials, far exceeding industry standards.
- 10 CNC Precision Routed Walls and Floors**
Computer driven routers precisely route walls and floors to fit exact specifications to eliminate gaps, misalignments and provide for a more solid integrated overall structure.



Each of these advantages have been engineered to deliver superior reliability, durability and most of all, customer satisfaction.



PACE ARROW

33D | 35QS | 35RB | 35S | 36U



PACE ARROW 35RB
Shown in Mystic decor
with Oxford cabinetry

PACE ARROW 35RB
Shown in Mystic decor
with Oxford cabinetry



PACE ARROW 35RB
Shown in Mystic decor
with Oxford cabinetry



PACE ARROW 35RB
Shown in Mystic decor
with Oxford cabinetry



FLEETWOOD RV
Build your own Pace Arrow at
fleetwoodrv.com/build-your-own



PACE ARROW 35S

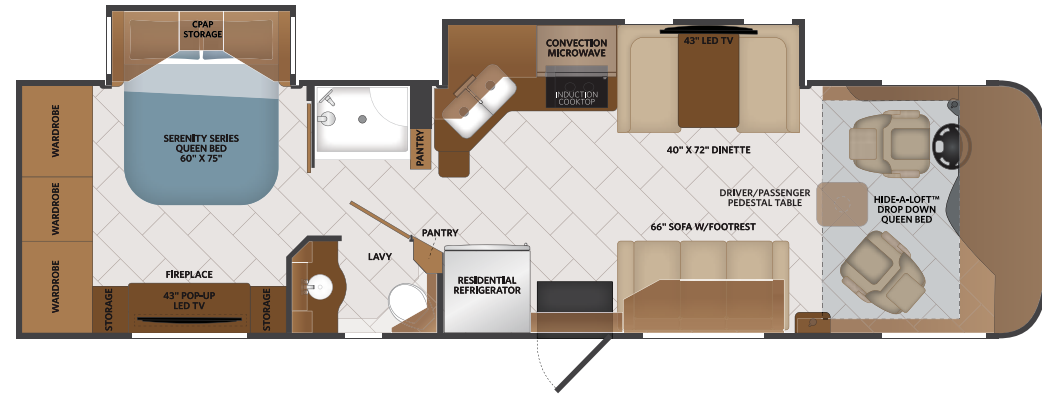




PACE ARROW 35RB
Shown in Mystic decor
with Oxford cabinetry

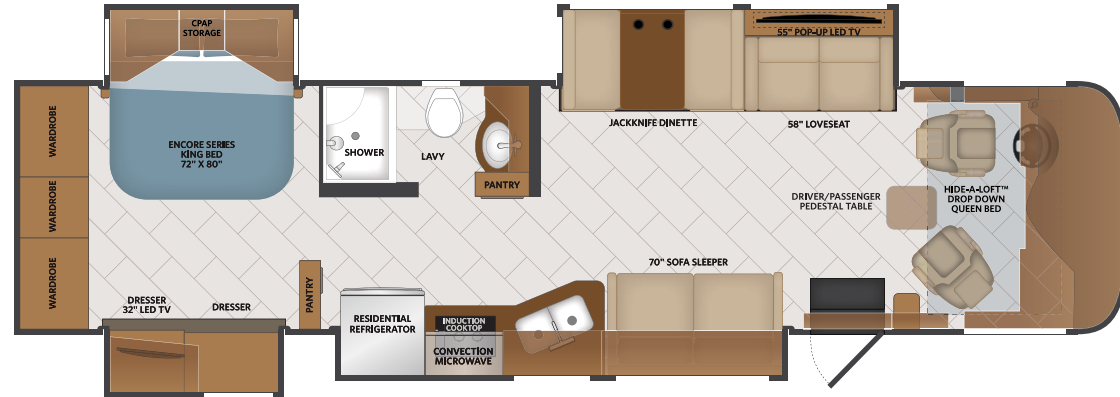
33D

Options:
099, 126, 147,
194, 436, 563,
815



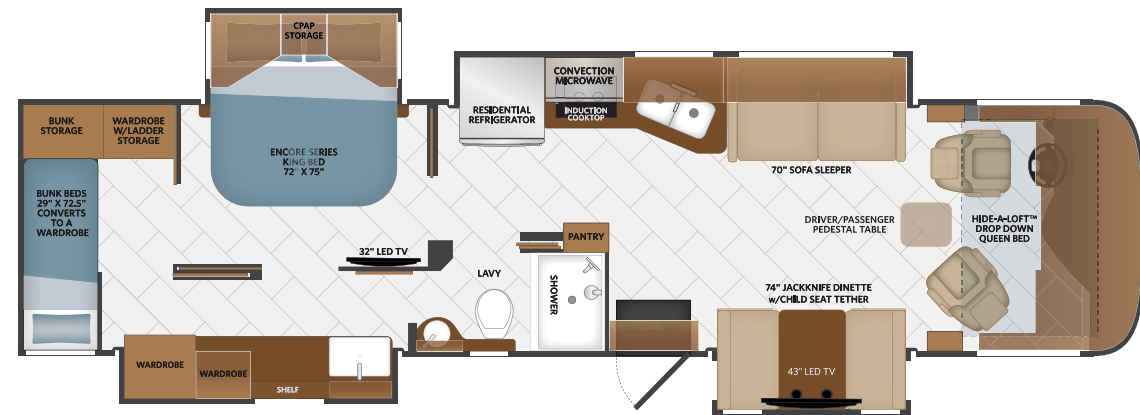
35QS

Options:
099, 126, 130,
147, 211, 219,
436, 563, 830,
833



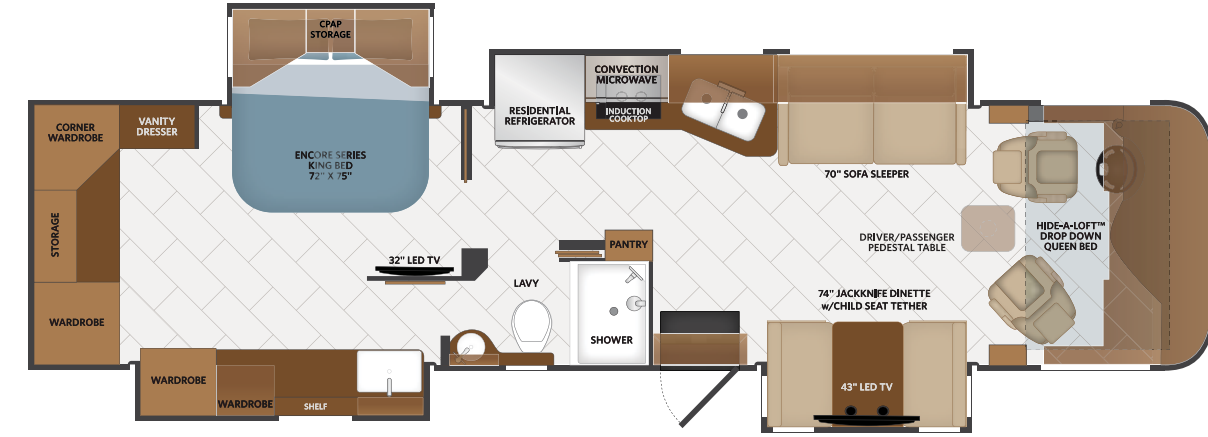
35RB

Options:
099, 110, 126,
131, 147, 194,
219, 436, 563



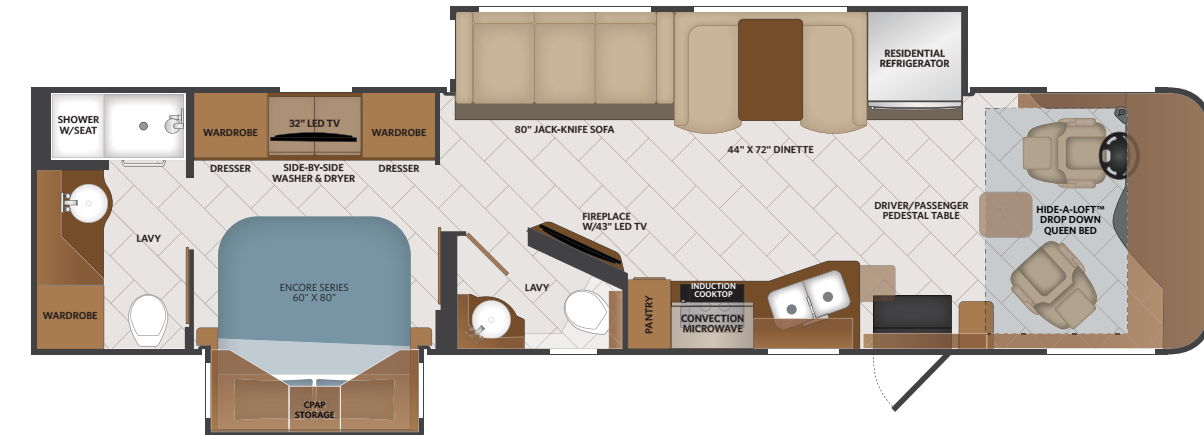
35S

Options:
099, 110, 126,
131, 147, 194,
219, 436, 563



36U

Options:
099, 110, 147,
194, 436, 563,
830



AVAILABLE OPTIONS

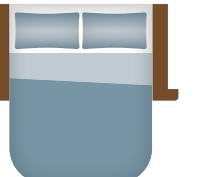
099	SATELLITE DELETE	219	QUEEN BED
110	TANKLESS WATER HEATER	345	MID-SHIP LED TV
130	WASHER/DRYER	436	CSA FREIGHTLINER® PACKAGE
131	WASHER/DRYER - STACKABLE (35RB/35S)	563	TECHNOLOGY PACKAGE
147	PREMIUM STEREO UPGRADE	815	FOLD-AWAY SOFA
194	THEATRE SEATING SOFA	830	FACING DINETTE
211	THEATRE SEATING SYSTEM W/OPOSING FOLDAWAY LOVESEAT	833	FREE STANDING DINETTE w/CREDENZA

130 WASHER/DRYER
131 WASHER/DRYER
- STACKABLE
(35RB/35S)

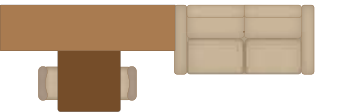
135 MID-SHIP LED TV



194 THEATRE SEATING SOFA



219 QUEEN BED



833 FREE STANDING DINETTE
w/CREDENZA

211 THEATRE SEATING SYSTEM
W/OPOSING FOLDAWAY
LOVESEAT



815 FOLD-AWAY SOFA



830 FACING DINETTE

EXTERIOR GRAPHICS



Malibu



Sable



Vision

STATE-OF-THE-ART TECHNOLOGY
Optional Package Upgrade

Technology Package Includes:

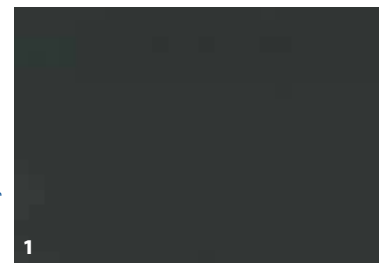
- WiFiRanger™ Sky4 ProPack w/LTE
- WeBoost Cell Booster
- MobileEye Collision Mitigation
- Kenwood® Upgraded Stereo
- 265 Watt Solar Panel



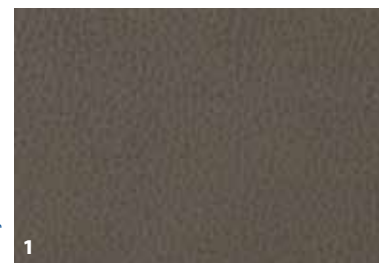
Product information, photography and illustrations included in this publication were as accurate as possible at the time of printing.

INTERIOR DECOR

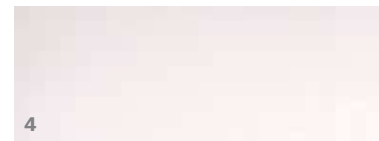
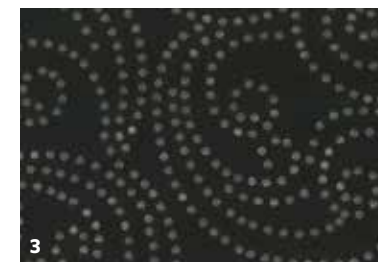
Alloy



Mystic



Vapor



1 SOFA
2 LIVING ACCENT

3 BEDSPREAD
4 COUNTERTOP

5 FLOORING
6 CARPET

CABINERY



Cappuccino



Greystone



Oxford

Pace Arrow interior designer recommends:

- Alloy décor with Cappuccino or Greystone Cabinetry
- Mystic décor with Greystone or Oxford Cabinetry
- Vapor décor with Oxford Cabinetry

Create a customized look that reflects your personal style.

EXTERIOR	33D	35QS	35RB	35S	36U
Aerodynamic Fiberglass Cap w/ Automotive Headlighting	S	S	S	S	S
Hood Insert and Seamless Mounting	S	S	S	S	S
Rear Fiberglass Cap w/Fiberglass Rear Engine Access, Automotive Lighting and Grill	S	S	S	S	S
Fiberglass Wheel Well Trims	S	S	S	S	S
TPO Roof	S	S	S	S	S
Premier Four-Color Full Body Paint w/Front Clear Mask	S	S	S	S	S
Electric Patio Awning w/LED lighting and Wind Sensor Retract	S	S	S	S	S
Slideout Awning Toppers Above all Slideouts	S	S	S	S	S
Radius Door w/Screendoor, w/Latch, Deadbolt lock and Frameless Window	S	S	S	S	S
Acrylic Grab Handle at Entry Door	S	S	S	S	S
Exterior Power Entry Step	S	S	S	S	S
Baggage Doors Side Swing Aluminum Bus-Style	S	S	S	S	S
Dark Tinted Frameless Large Windows	S	S	S	S	S
LED Patio Light	S	S	S	S	S
Clearance and Marker Lighting LED - Front/Side/Rear	S	S	S	S	S
Exterior Service Station w/Water Pump Switch, Exterior Shower, Black Tank Flush, City Water Hookup, Towel Holder and Drainage Valves	S	S	S	S	S
Park Cable and Satellite Hookup Exterior	S	S	S	S	S
Hitch - Capacity of 10,000 # w/ 7-Way Round Tow Connection	S	S	S	S	S
Underhood Utility Light	S	S	S	S	S
Unidirectional King Controls Jack Antenna	S	S	S	S	S
Battery Disconnect	S	S	S	S	S
Metal Interior Grab Handle at Entry	S	S	S	S	S
Auto Leveling Jacks Control	S	S	S	S	S
Entry Door Manual Roller Shade	S	S	S	S	S
King Satellite to the Universal Satellite w/o Receivers	S	S	S	S	S

Roof Vent Rain Covers	S	S	S	S	S
100w Solar Panel	S	S	S	S	S
CAB EXTERIOR	33D	35QS	35RB	35S	36U
Automotive One-Piece Windshield	S	S	S	S	S
Daytime Running Lights	S	S	S	S	S
Remote Power/Heated Mirrors w/ Turn Signals and Side Cameras - Black	S	S	S	S	S
Tinted Frameless Slider Driver/ Passenger Windows	S	S	S	S	S
Fog Lamps	S	S	S	S	S
Automotive Style Windshield Wiper System	S	S	S	S	S
CAB INTERIOR	33D	35QS	35RB	35S	36U
Black Instrument Gauges w/ Electronic Information Center	S	S	S	S	S
Dash Air Conditioning and Heat High Output	S	S	S	S	S
Air Suspension Deflation System	S	S	S	S	S
Electronic Cruise Control	S	S	S	S	S
Windshield Wipers w/Delay	S	S	S	S	S
Remote Switch for Power/Heated Mirrors	S	S	S	S	S
Steering Wheel w/Tilt and Telescoping Column	S	S	S	S	S
Driver Console w/Lower Storage Bin	S	S	S	S	S
Mobile Vision 6" Color Monitor for Side and Rear Cameras	S	S	S	S	S
Pioneer Touch Screen Radio w/AM/ FM/CD/DVD/Bluetooth®	S	S	S	S	S
Sirius/XM® Satellite Radio Ready (Requires Subscription)	S	S	S	S	S
USB and Auxiliary Inputs	S	S	S	S	S
Driver Chair w/Reclining Back, Swivel and 6-way Power Controls	S	S	S	S	S
Passenger Chair w/Reclining Back, Swivel and 6-way Power Controls and Footrest	S	S	S	S	S
3-Point Seat Belts w/Adjustable Straps - Driver/Passenger	S	S	S	S	S
12V Accessory Ports	S	S	S	S	S

110-Volt AC Outlet at Dash and Passenger Area	S	S	S	S	S
Automotive Style Wrap Around Dash	S	S	S	S	S
Passenger Armrest	S	S	S	S	S
Cupholders Driver/Passenger	S	S	S	S	S
Roller Shade Front Power	S	S	S	S	S
Driver/Passenger Pedestal Table	S	S	S	S	S
Privacy Curtains for Driver/Passenger Windows	S	S	S	S	S
Stereo Switch Auxiliary Power at Dash	S	S	S	S	S
Generator On/Off Switch	S	S	S	S	S
Battery Booster Switch	S	S	S	S	S
Kenwood® Stereo Upgrade	O	O	O	O	O
EXTERIOR	33D	35QS	35RB	35S	36U
Sofa - Loveseat w/Footrest	S	—	—	—	—
Sofa - Jackknife	—	—	—	—	S
Sofa - Loveseat	—	S	—	—	—
Sofa - Sofa Sleeper	—	S	S	S	—
Sofa - Side Sleeper	O	—	—	—	—
Sofa - Theatre Seating w/Foldout Loveseat	—	O	—	—	—
Theatre Seating w/Manual Recliners	O	—	O	O	O
Booth Dinette	S	—	—	—	S
Jack-Knife Facing Dinette	—	S	S	S	O
Hide-A-Loft™ Queen Bed	S	S	S	S	S
Fireplace, Electric	S	—	—	—	S
Flat Soft Touch Vinyl Ceiling	S	S	S	S	S
Tile Flooring 12" x 24" Tarket	S	S	S	S	S
Tile Flooring in Slide 12" x 24" Tarket	S	S	S	S	S
Hidden Cabinet Door Hinges Throughout	S	S	S	S	S
Raised Panel Cabinet Doors Upper & Lower, Solid Wood	S	S	S	S	S
Drawer Fronts Solid Wood	S	S	S	S	S
Color Coordinating Solid Wood Fascia	S	S	S	S	S
Ceiling Trim w/Lighting	S	S	S	S	S

Valances w/Lambrequins Solid Wood	S	S	S	S	S
Slide Trims Solid Wood	S	S	S	S	S
Roller Shades Day/Night - Manual	S	S	S	S	S
Ceiling/Under Cabinet Lighting Flush Mount LED 3" Puck	S	S	S	S	S
INTERIOR ENTRY	33D	35QS	35RB	35S	36U
Entry Door 30" w	S	S	S	S	S
Entry Step w/LED Accent Lighting	S	S	S	S	S
Battery Disconnect	S	S	S	S	S
Grab Handle at Entry Metal Interior	S	S	S	S	S
KITCHEN	33D	35QS	35RB	35S	36U
Refrigerator -18.7 cu.ft. Residential, Bottom Freezer Stainless Steel	—	S	S	S	S
Refrigerator -19 cu.ft. Residential Stainless Steel	S	—	—	—	—
Induction Cooktop 2-Burner Recessed	S	S	S	S	S
Microwave Stainless Steel Over the Range Convection	S	S	S	S	S
Galley Countertop Solid Surface	S	S	S	S	S
Tile Backsplash	S	S	—	—	S
Shadow Box Glass Tile Backsplash w/ Window & Shade	—	—	S	S	—
Undermount Stainless Steel Sink Deep Double Bowl	S	S	S	S	S
Polished Solid Surface Sink Covers	S	S	S	S	S
Residential Single Handle Faucet w/ Pullout Sprayer	S	S	S	S	S
Adjustable Shelves Throughout	S	S	S	S	S
Full Extension Drawer Guides w/ Latches	S	S	S	S	S
Fantastic® Power Vent w/Wall Switch	S	S	S	S	S
BEDROOM OR BUNK AREA	33D	35QS	35RB	35S	36U
Queen Size Bed w/Serenity Memory Foam Mattress	S	O	—	—	—
King Size Dream Easy Serenity Memory Foam Mattress w/Adjustable Head	—	S	—	—	S
Queen Size Dream Easy Serenity Memory Foam Mattress w/Adjustable Head	—	O	S	S	—

Bunk Beds	—	—	S	—	—
Designer Bedspread, Pillow Shams & Pillows	S	S	S	S	S
Coordinating Fabric Window Treatments/ Lambrequins	S	S	S	S	S
SurfX Nightstand Tops	S	S	S	S	S
Solid Wood Nightstand Tops	—	S	—	—	—
Electric Fireplace	S	—	—	—	—
Washer/Dryer Inline	—	O	O	O	—
Washer/Dryer Side-by-Side	—	—	—	—	S
Washer/Dryer Combo	O	O	O	O	—
C-pap Prep in Bedroom Overhead	S	S	S	S	S
LAVY	33D	35QS	35RB	35S	36U
Countertop Solid Surface	S	S	S	S	S
Tile Backsplash	S	S	S	S	S
Double Handle Faucet Residential Brushed Nickel	S	S	S	S	S
Hardwood Medicine Cabinet w/ Mirror	S	S	S	S	S
Fiberglass Shower Surround	S	S	S	S	S
Glass Shower Door	S	S	S	S	S
Shower Skylight	S	S	S	S	S
Metal Shower Head w/Sliding Adjustable Bar, Soap Dish/Matching Single Valve Faucet	S	S	S	S	S
Macerator Toilet	S	—	S	S	S
Standard Toilet - Porcelain	—	S	—	—	—
Fantastic® Power Vent w/Wall Switch	S	S	S	S	S
Towel Rings	S	S	S	S	S
ENTERTAINMENT	33D	35QS	35RB	35S	36U
LG 32" LED TV (Bedroom)	S	S	S	S	S
LG 43" LED TV (Living Area)	S	S	S	S	S
LG 55" LED TV (Living Area - Televator)	—	S	—	—	—
LG 43" LED TV (Bedroom Area - Televator)	S	—	—	—	—
HDMI Video Distribution	S	S	S	S	S
LG Blu-Ray® Player	S	S	S	S	S
Bluetooth® Soundbar	S	S	S	S	S

Entertainment Center w/40" Samsung LED TV/Bluetooth® Soundbar Exterior	S	S	S	S	S
ELECTRIC & UTILITIES	33D	35QS	35RB	35S	36U
Technology Package (WiFiRanger™ Sky4 ProPack w/LTE, WeBoost Cell Booster, Mobile Eye Collision Mitigation, Upgraded Kenwood® Stereo, 265 Watt Solar Panel)	O	O	O	O	O
Dual-Roof Mount High Efficiency Ducted 15,000-BTU AC Units w/Chill Grill & Rear Heat Pump	S	S	S	S	S
25,000/20,000 BTU Furnace	S	—	—	—	—
30,000/20,000 BTU Furnace	—	S	S	S	S
Service: 50 AMP	S	S	S	S	S
Converter: 60 AMP Power Converter	S	S	S	S	S
Inverter: Single 2000W Pure Sine	S	S	S	S	S
Neutral Loss Protection	S	S	S	S	S
Generator: 6KW Onan® Quiet Diesel	S	S	S	S	S
Auto Generator Start	S	S	S	S	S
Auxiliary Batteries 6V (4)	S	S	S	S	S
Master Battery Disconnect Switch	S	S	S	S	S
Water Pump: 12V 3GPM High Capacity Shurflo®	S	S	S	S	S
Water Purification System	S	S	S	S	S
Exterior Shower	S	S	S	S	S
Cable TV/Satellite Hookup	S	S	S	S	S
Toilet Tank San-T-Flush System	S	S	S	S	S
Multiplex Wiring Control System w/ Touchscreen and App Control	S	S	S	S	S
LP/CO Smoke Detectors Combo, Fire Extinguisher	S	S	S	S	S
GFCI Receptacle in Exterior Storage	S	S	S	S	S
Central Vacuum System	S	S	S	S	S
Solar Prep on Roof	S	S	S	S	S

**CSA Standards may require substitution or deletion to achieve conformance



BLIND SPOT DETECTION
Ensure smart, safe driving with Velvac® blind-spot upgraded mirrors for your Pace Arrow. A safety feature, where a light will illuminate on the side mirror if an object is in the blind spot ensuring safe travels. Mirrors are power, heated, remote with turn signals and side cameras.



AUTOMOTIVE-INSPIRED DASH
Drive in comfort with an LCD digital dash that can be controlled from the integrated steering wheel, auto headlights and blind spot detection in mirrors.



ON-DEMAND WATER HEATER
Provides continuous hot water. A much more efficient alternative to traditional tank style water heaters.



OUR VERY OWN FLEETWOOD RV MOTORHOME SERVICE CENTERS

At Fleetwood RV, we strive to deliver peace-of-mind at every turn. Our devotion to customer service starts with our trusted dealer network and spans to our own staff of motorhome service professionals at REV Recreation Group's regional technical centers. The motorhome service centers are strategically located throughout the United States to provide you convenient service wherever the road takes you.

Below, you'll find the closest motorhome service center, as well as a list of the other centers. Please visit www.fleetwoodrv.com/motorhome-service-centers to schedule a Service Appointment.

East Coast
REV Technical Center
800-509-3417

West Coast
REV Technical Center
877-466-6226

ROADSIDE ASSISTANCE. ANYWHERE. ANYTIME.

- 24/7 CUSTOMER SUPPORT FOR:
- FUEL
 - BATTERY
 - LOCKSMITH
 - TOWING
 - SLIDE-OUT ISSUES
 - AND MUCH MORE!

1-855-268-0414



One-year of REV Assist is free with the purchase of any new 2020 Fleetwood. You may extend your coverage after the first year at www.revgroup.com/rev-assist.



HIDE-A-LOFT™ DROP DOWN QUEEN BED
Invite more guests on your road trip without compromising space featuring industry-leading headroom and up to 600lb. capacity.



STACKABLE WASHER/DRYER
Keep up with the laundry while enjoying time away and this space saving design. Available on the 35RB/35S floorplans.



CPAP READY
This convenient storage solution is specifically designed to organize and conceal CPAP machines while allowing for easy access and opening for hoses.



STAY COOL
Dual-roof mounted high efficiency ducted 15,000-BTU AC Units with chill and grill and rear heat pump is standard.



HIGH END APPLIANCES
All the comforts of home with Whirlpool® appliances including a residential refrigerator/freezer and microwave.



POWER CONTROLLED COCKPIT SEATING
Driver and Passenger cockpit seating is reclining back, swivel plus 6-way power controls.

PACE ARROW

CHASSIS	33D	35RB	35QS	35S	36U
Wheelbase (inches)	208"	252"	252"	252"	252"
Front GAWR (lbs)	10,500	10,500	10,500	10,500	10,500
Rear GAWR (lbs)	17,500	19,000	19,000	19,000	19,000
GCWR (lbs)	30,000	33,000	33,000	33,000	33,000
Hitch Rating Weight (lbs)	10,000	10,000	10,000	10,000	10,000
Tongue Weight (lbs)	1,000	1,000	1,000	1,000	1,000
Fuel Capacity (gal)	90	90	90	90	90

DIMENSIONS AND CAPACITIES	33D	35RB	35QS	35S	36U
Overall Length (inches)	33' 11"	37' 7"	37' 7"	37' 7"	37' 7"
Overall Height (with A/C)	12' 2"	12' 2"	12' 2"	12' 2"	12' 2"
Overall Width (maximum)	102"	102"	102"	102"	102"
Interior Height (maximum)	84"	84"	84"	17'	17'
Interior Width (maximum)	96"	96"	96"	17'	17'
Patio Awning Width (ft.)	17'	16'	14'	16'	17'
Second Patio Awning Width (ft./in.)	NA'	11'	NA'	11'	NA
Exterior Storage (cu. ft.)	133	164	112	164	164
Fresh Water Holding Tank (gal)	77	100	77	100	77
Grey Water Holding Tank (gal)	60	52	60	52	60
Black Water Holding Tank (gal)	32	40	32	40	32
Appliance Propane Tank (gal)	28.2	28.2	28.2	28.2	28.2
Water Heater Tank (gal)	6	6	6	6	6

Product information, photography and illustrations included in this publication were as accurate as possible at the time of printing.



FREEDOM BRIDGE® CHASSIS

33D — 300HP
Model: Freightliner® XCS Series
Engine: Cummins ISB 6.7L
Transmission: Allison® 2,100 MH 6-Speed w/Electronic Shifter
Alternator: Delcom Remy 160 Amp
Torque: 660 lb.-ft. @ 1,600 RPM
Horsepower: 300HP

35RB, 35S, 35QS, 36U — 340HP
Model: Freightliner® XCS Series
Engine: Cummins ISB 6.7L
Transmission: Allison® 2,500 MH 6-Speed w/Electronic Shifter
Alternator: Delcom Remy 160 Amp
Torque: 700 lb.-ft. @ 1,600 RPM
Horsepower: 340HP

DISCLAIMERS

1. GVWR (Gross Vehicle Weight Rating) is the maximum permissible weight of this fully loaded motorhome. The GVWR is equal to or greater than the sum of the (UVW) unloaded vehicle weight plus the (OCCC) occupant cargo-carrying capacity.
 2. GAWR (Gross Axle Weight Rating) is the maximum permissible loaded weight a specific axle is designed to carry.
 3. GCWR (Gross Combined Weight Rating) is the value specified by the motor home manufacturer as the maximum allowable loaded weight of this motorhome with its towed vehicle. Towing and braking capacities may be different. Refer to Fleetwood and chassis manufacturer's manuals for complete information.
 4. Length measured from front bumper to rear bumper (excludes accessories).
 5. Excludes safety equipment and awnings.
 6. Motorhomes feature a body width over 96" which will restrict your access to certain roads. Before purchasing, you should research any state and/or province road laws which may affect your usage.
 7. Tank manufacturer's listed water capacity (WC). Actual propane capacity is 80% of water listing as required by the safety code.
- † The chassis manufacturer recommends the installation of a supplemental brake control system to activate the brakes on the vehicle or trailer you are towing. Hitch receiver ratings expressed are maximum for the hitch receiver installed and may require the purchase of additional equipment that is dependent on the weight of the towed load. Consult with hitch receiver manufacturer for further information.
- * UVW and OCCC are found on the label containing the federal certification tag in each RV.
- ** Seatbelts and locations are shown in the brochure for display purposes only. Actual numbers and locations will vary by model.
- *** All 2020 REV Recreation Group motorhomes include a limited one year/15,000-mile coach warranty and three-year/45,000-mile structural warranty, whichever occurs first, and is fully transferable for the first 12 months.

FLEETWOOD MOTORHOME ASSOCIATION

As a Fleetwood RV owner, you're invited to become a member of the Fleetwood Motorhome Association (FMA). Becoming a member is the perfect way to meet other Fleetwood owners who love to travel across America and share in the RV lifestyle. Visit the FMA website at www.fma4fun.org to learn more and join the fun.

CONTACT US

To locate a dealer near you, visit our website at www.fleetwoodrv.com or call 1-800-322-8216. We can also be contacted at Fleetwood RV Customer Relations, P.O. Box 1007, Decatur, IN 46733.

IMPORTANT—PLEASE READ: Product information, photography and illustrations included in this publication were as accurate as possible at the time of printing. For further product information and changes, please visit our website at www.fleetwoodrv.com or contact your local Fleetwood RV dealer. Prices, materials, design and specifications are subject to change without notice. All weights, fuel, liquid capacities and dimensions are approximate. Fleetwood RV has designed its recreational vehicles to provide a variety of uses for its customers. Each vehicle features optimal seating, sleeping, storage and fluid capacities. The user is responsible for selecting the proper combination of loads (i.e., occupants, equipment, fluids, cargo, etc.) to ensure that the vehicle's capacities are not exceeded.

YOUR LOCAL DEALER



Fleetwood RV is part of REV Recreation Group, a division of REV Group, Inc., a family of 29 industry-leading motor vehicle brands. At REV Group, we innovate, design and build products that connect and protect thousands of people every day—our trusted vehicles are engineered with the utmost rigor and precision to deliver the highest levels of performance, reliability, durability and safety.



IMPORTANT—PLEASE READ: Product information, photography and illustrations included in this publication were as accurate as possible at the time of printing. For further product information and changes, please visit our website at www.fleetwoodrv.com or contact your local Fleetwood RV dealer. Prices, materials, design and specifications are subject to change without notice. All weights, fuel, liquid capacities and dimensions are approximate. Fleetwood RV has designed its recreational vehicles to provide a variety of uses for its customers. Each vehicle features optimal seating, sleeping, storage and fluid capacities. The user is responsible for selecting the proper combination of loads (i.e., occupants, equipment, fluids, cargo, etc.) to ensure that the vehicle's capacities are not exceeded.

www.fleetwoodrv.com

©2019 REV Group, Inc. Printed in the USA. 10/19. Model Year 2020, First Edition.

Part #: L93-0022